



MICROTEC LINE

Micro Tufted Carpet Tile 100% Solution Dyed PA Yarns



Red Grey / Rouge Gris 996



TecSOM CRÉATEUR FRANÇAIS
DE SOLS TEXTILES DEPUIS 1881

Web: fixitdesign.ae
Phone: [+971554722980](tel:+971554722980)
Email: info@fixitdesign.ae



MICROTEC LINE



Light Blue Beige / Bleu Clair Beige 924



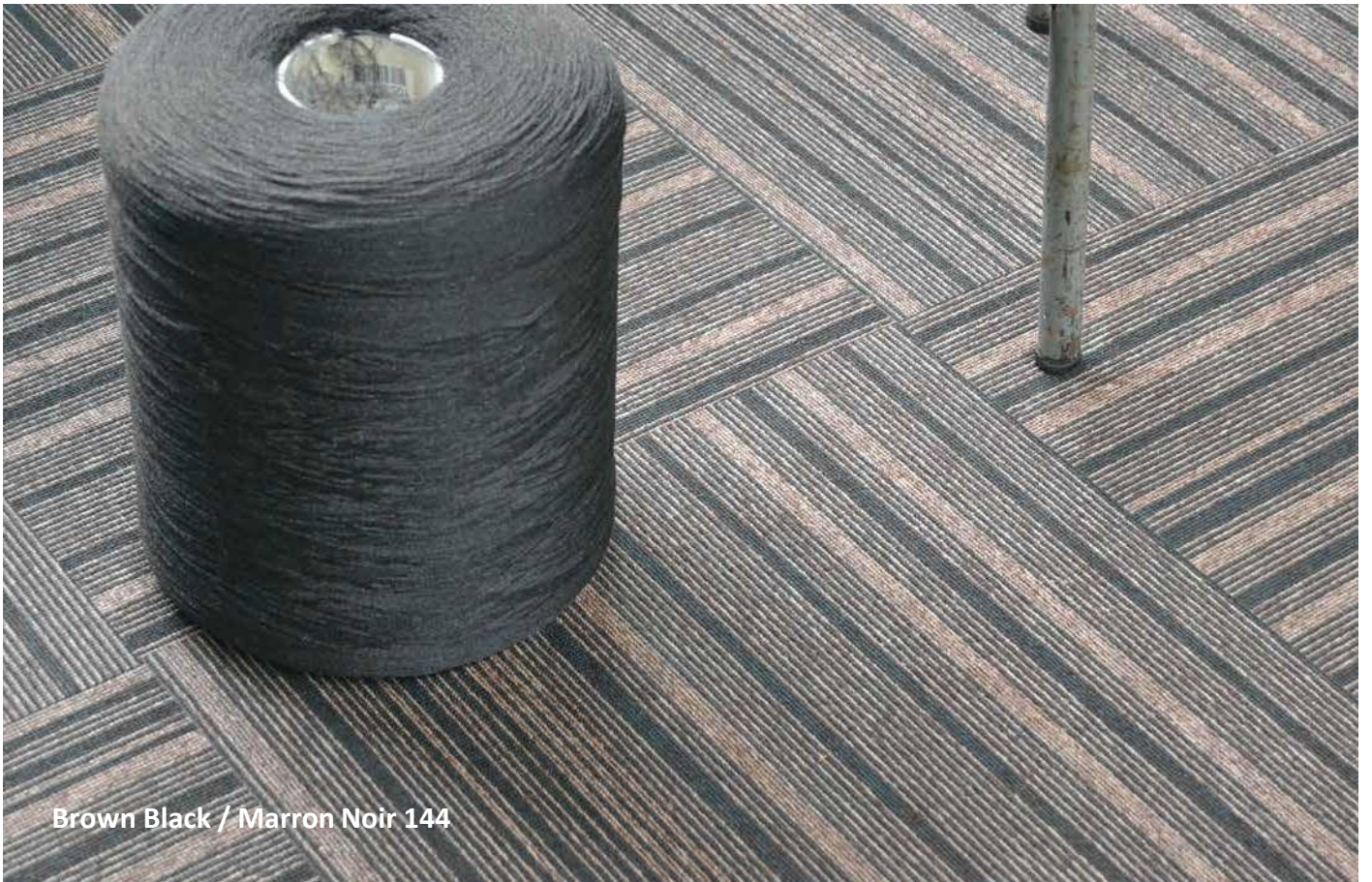
Light Blue Beige / Bleu Clair Beige 924



MICROTEC LINE



Brown Black / Marron Noir 144



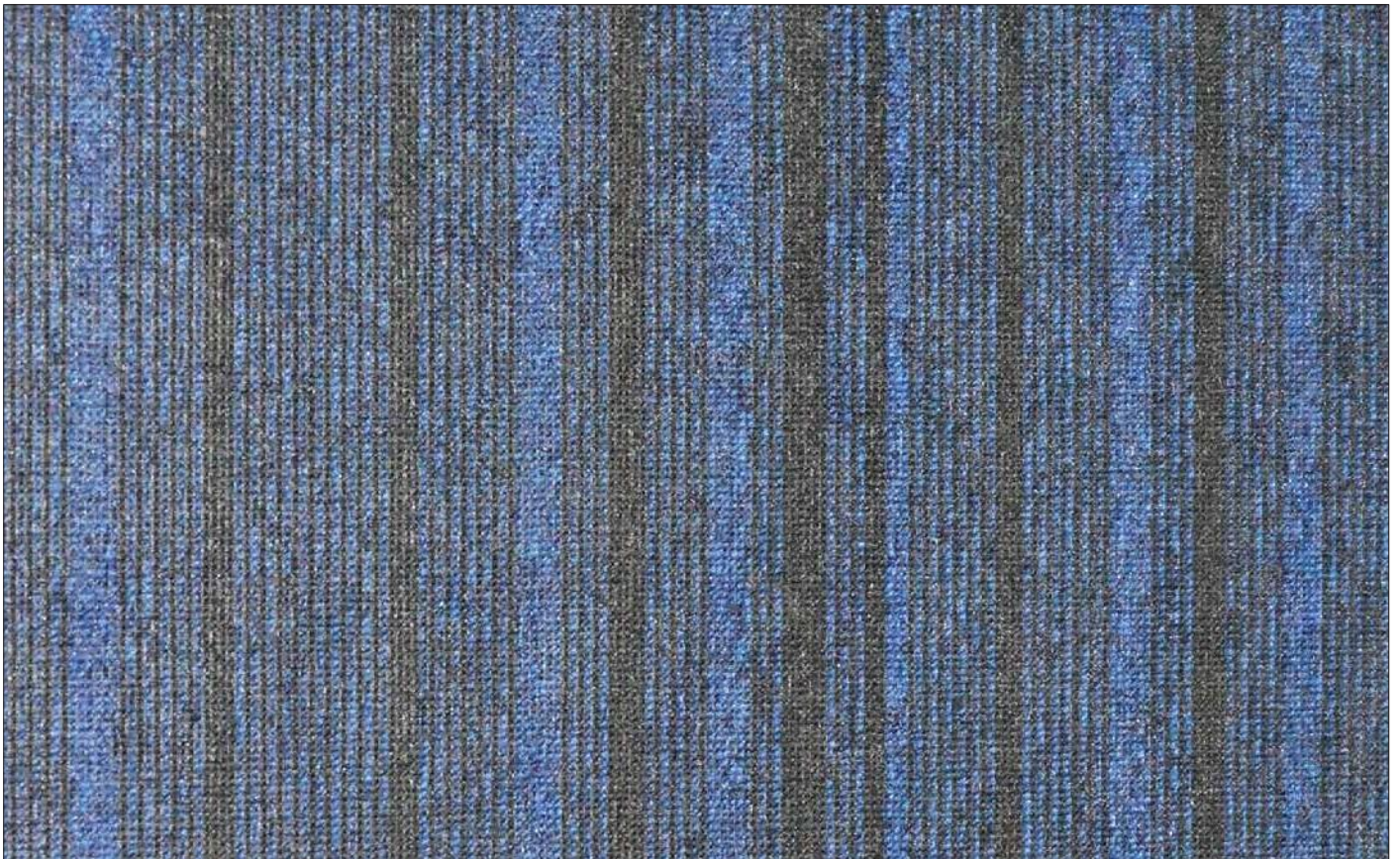
Brown Black / Marron Noir 144



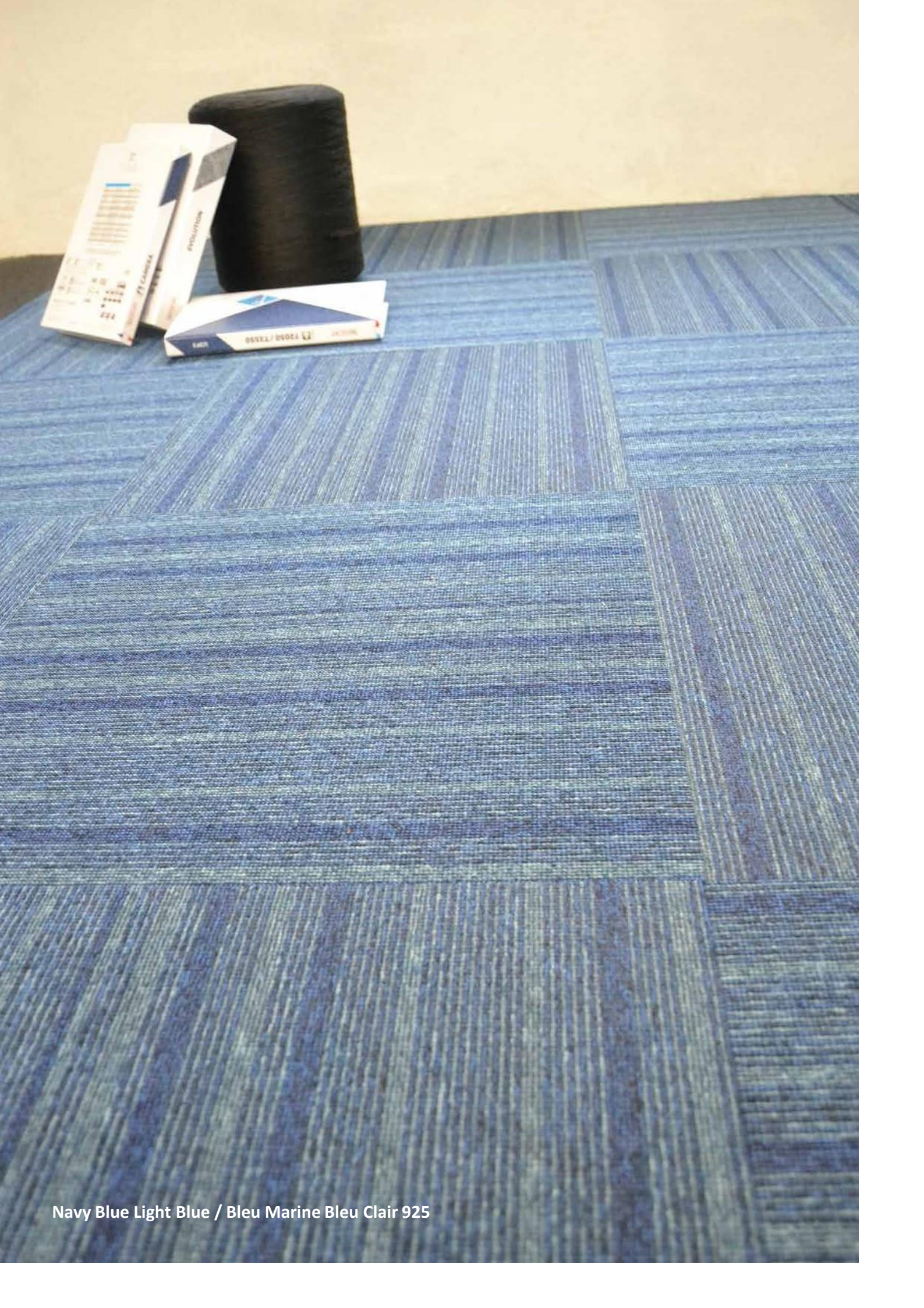
Brown Beige / Marron Beige 046



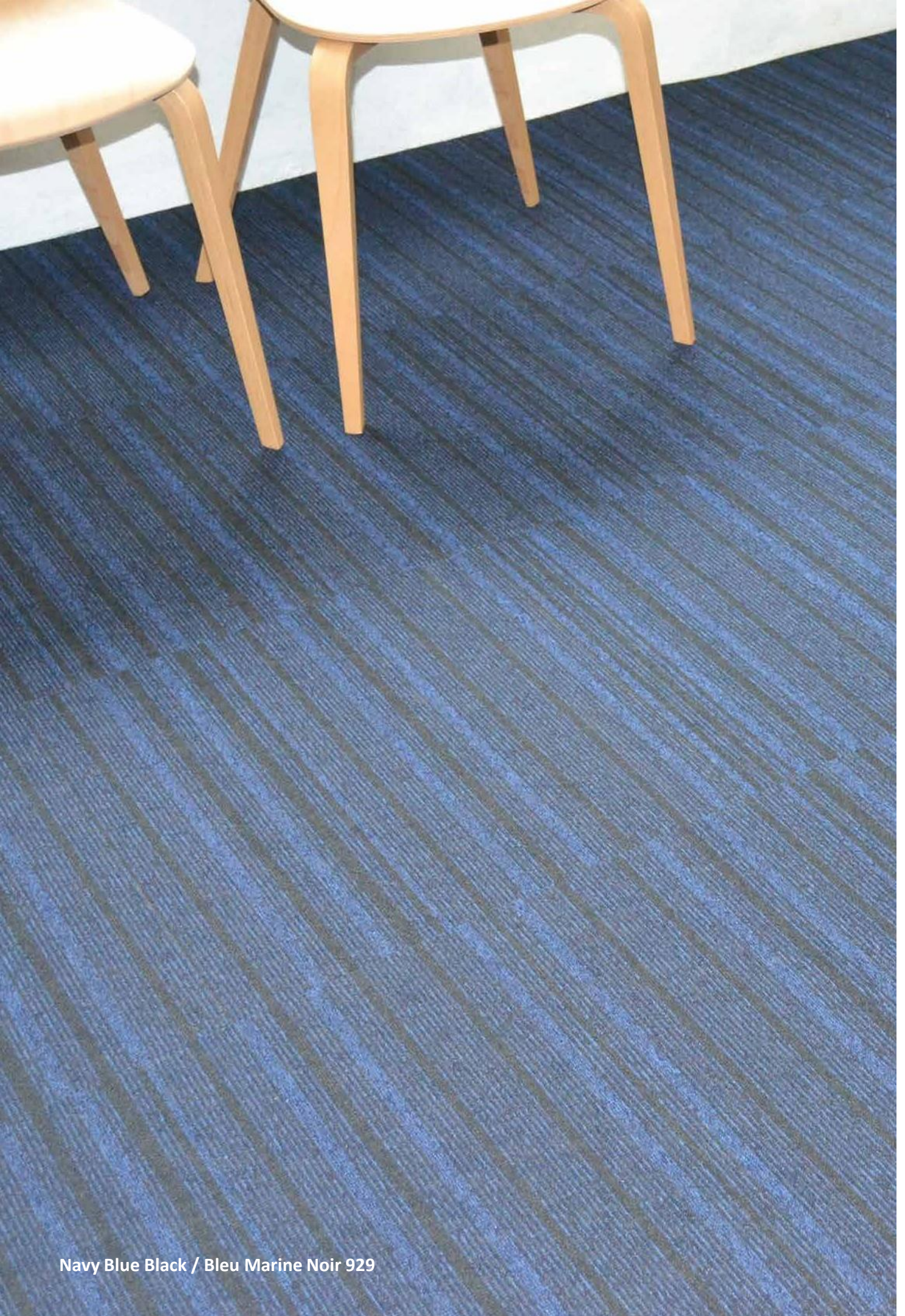
Navy Blue Light Blue / Bleu Marine Bleu Clair 925



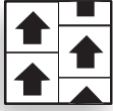
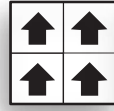
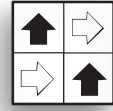
Navy Blue Black / Bleu Marine Noir 929



Navy Blue Light Blue / Bleu Marine Bleu Clair 925



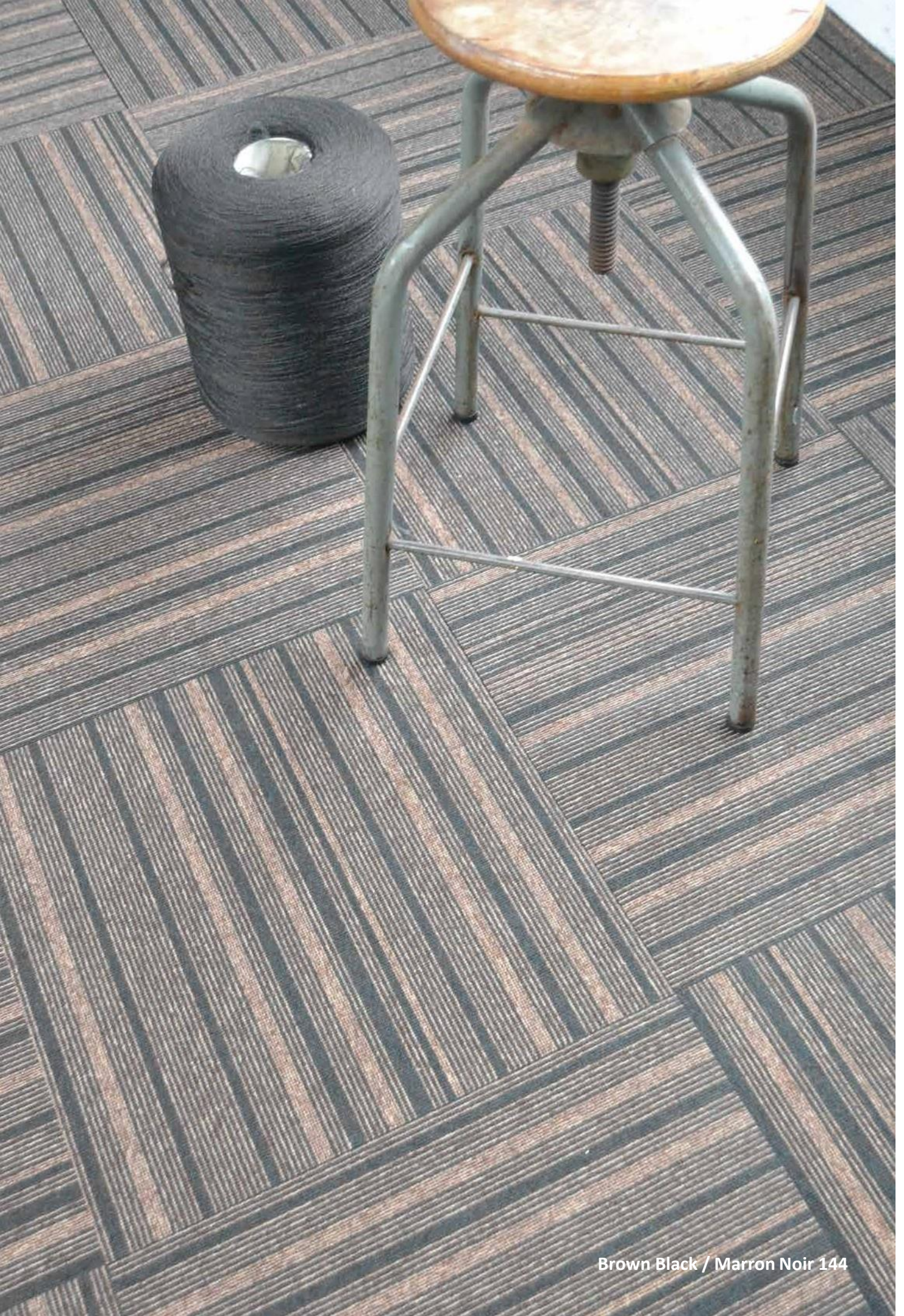
Navy Blue Black / Bleu Marine Noir 929



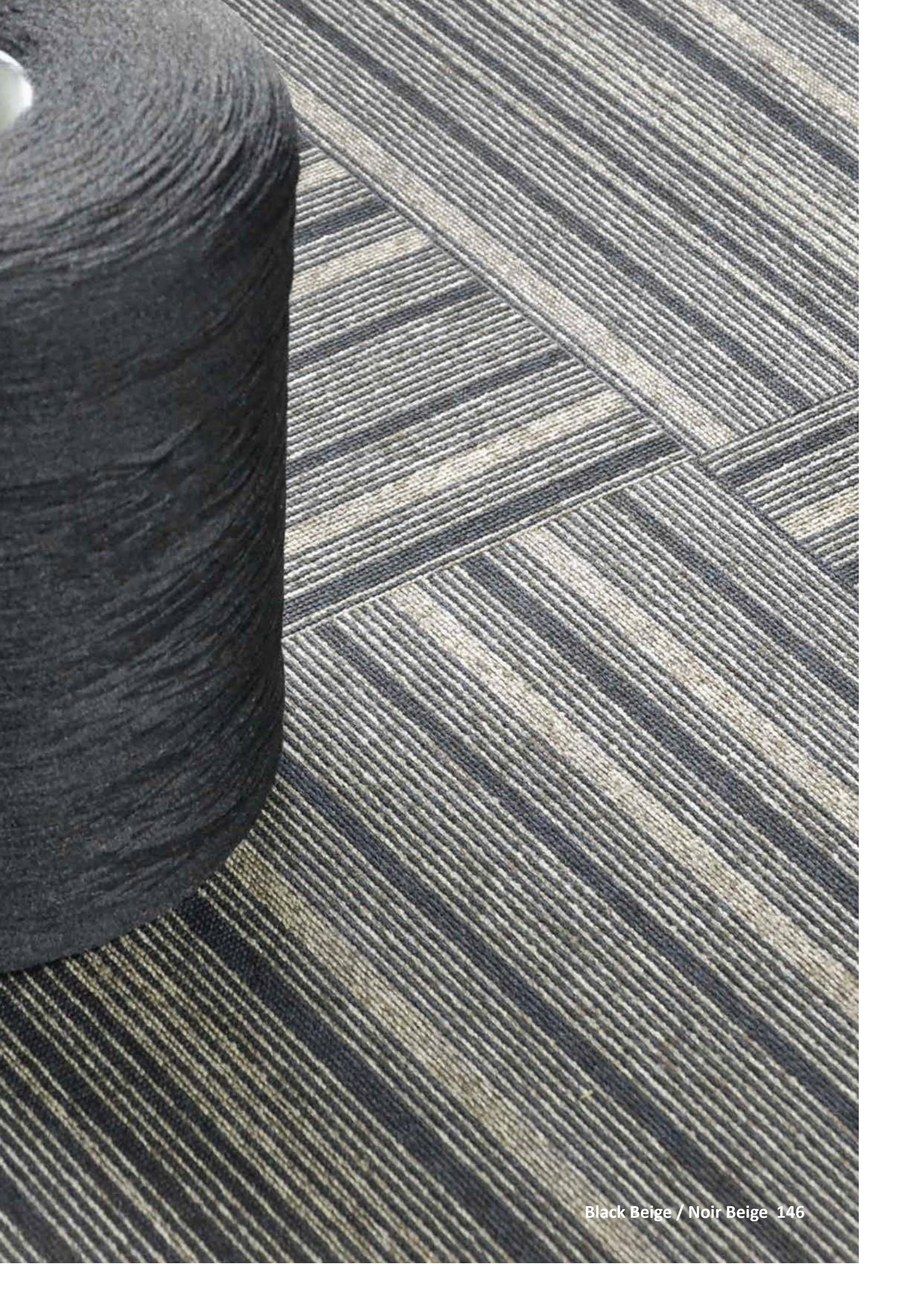
Brown Beige / Marron Beige 046



Black Beige / Noir Beige 146



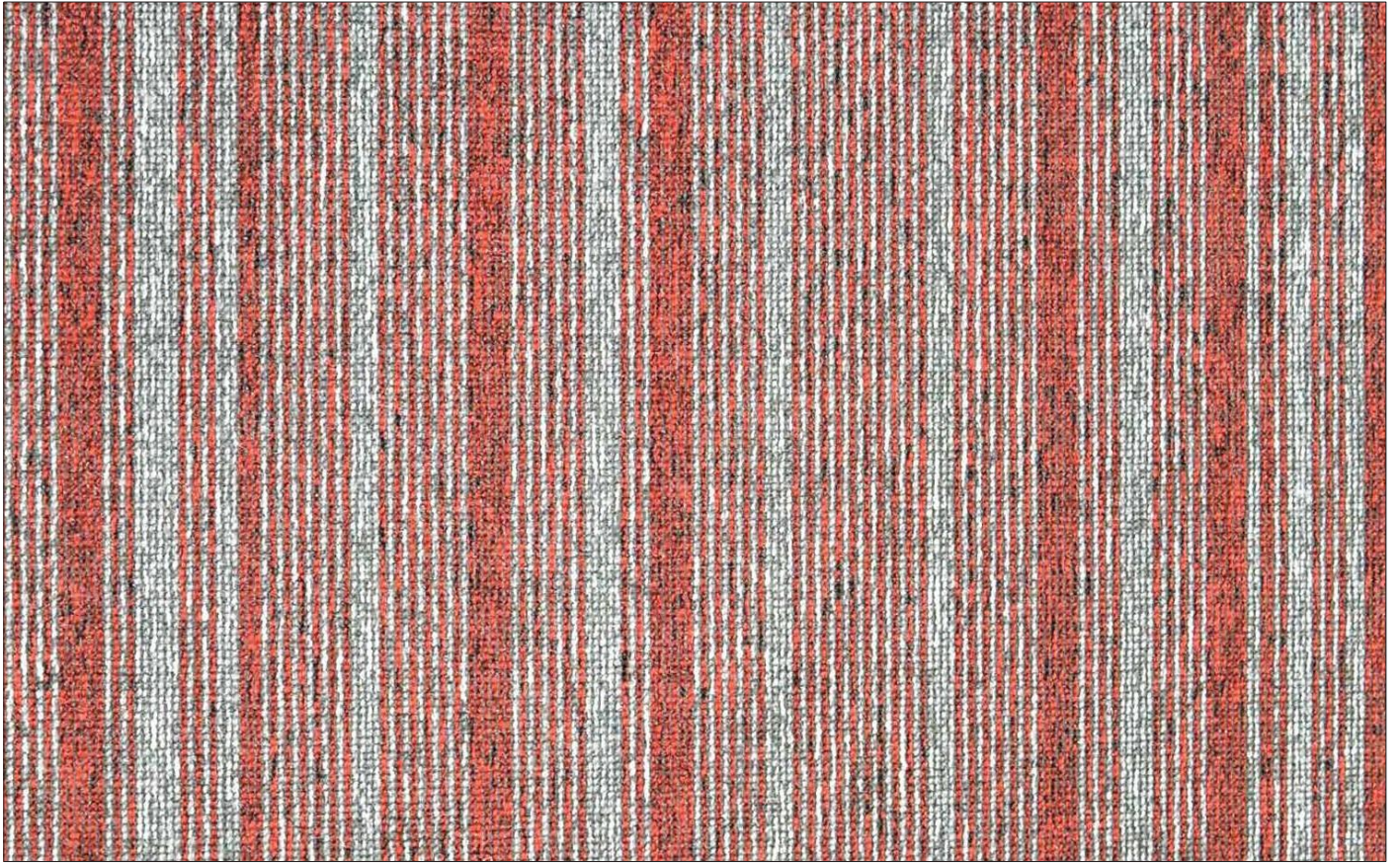
Brown Black / Marron Noir 144



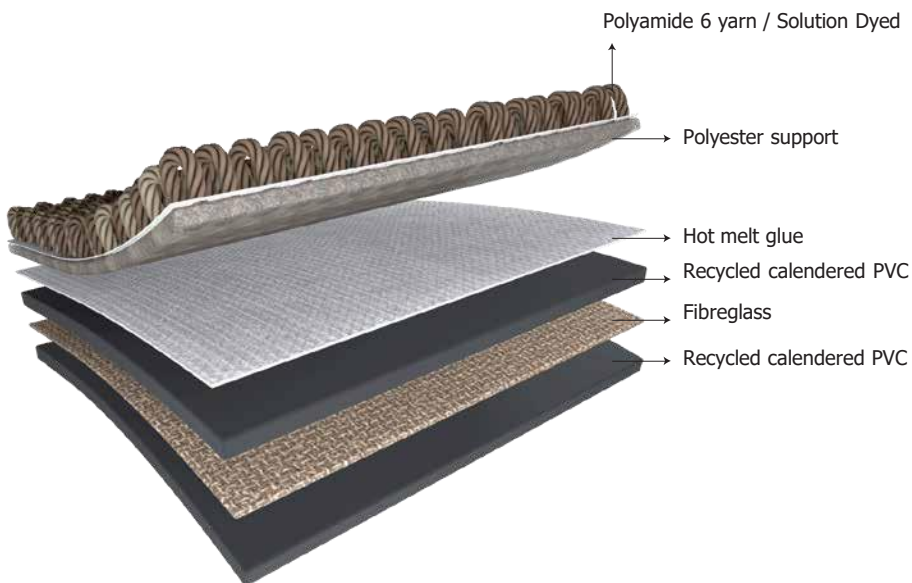
Black Beige / Noir Beige 146



MICROTEC LINE



Red Grey / Rouge Gris 996



Heavy PVC Backing

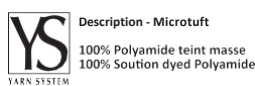
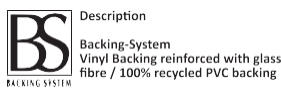
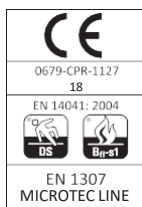
MICROTEC LINE

Micro Tufted Carpet Tile 100% Solution Dyed PA Yarns



SPECIFICATION

| English | Français | Norm | Microtec Line |
|--------------------------|---|--------------|---|
| Pile fibre | Composition fibreuse | | 100% Polyamide (Teint masse / Solution dyed) |
| Gauge | Jauge | | 1/10 Cut pile |
| Tuft density | Densité | ISO 1763 | 159,900 Stitches/m ² |
| Total pile mass | Poids de fil | ISO 8543 | 440 g/m ² |
| Total weight | Masse totale | ISO 8543 | 4370 g/m ² |
| Total thickness | Epaisseur totale | ISO 1765 | 6.0 mm |
| Primary backing | Premier dossier | | Non tissé / Non woven primary backing |
| Backing | Envers | | Matières recyclées renforcées par un voile de verre Vinyl backing reinforced with glass fiber (100% recycled PVC) |
| Reaction to fire | Comportement au feu | EN 13501-1 | Bfl-s1 |
| Castor chair test | Aptitude à la chaise à roulettes | EN 985 | R ≥ 2.4 |
| Impact sound reduction | Isolation acoustique aux bruits de chocs | ISO 717/2 | 16 dB |
| Sound absorption value | Absorption acoustique | ISO 11654 | aw = 0.15 (H) |
| Thermal resistance | Résistance thermique | EN 10456 | 0.07 m ² K/W |
| Charging ability | Essai du marcheur | ISO 6356 | ≤ 2.0 kV |
| Electrostatic properties | Résistances électriques | ISO 10965 | ~10 ¹⁰ Ω |
| Light fastness | Solidité à la lumière | EN 105 - B02 | 7/8 |
| Dimensional stability | Stabilité dimensionnelle | EN 986 | ≤ 0.10% |
| Tile size | Dimensions | | 50 x 50 cm |
| Tiles per box | Dalles par boîte | | 20 = 5m ² |



Classification

| | | |
|--------|---------|----------|
| ✓ | | |
| 33 (4) | 32 (3) | 31 (2+) |
| heavy | general | moderate |



LEED Répond à la démarche HQE

